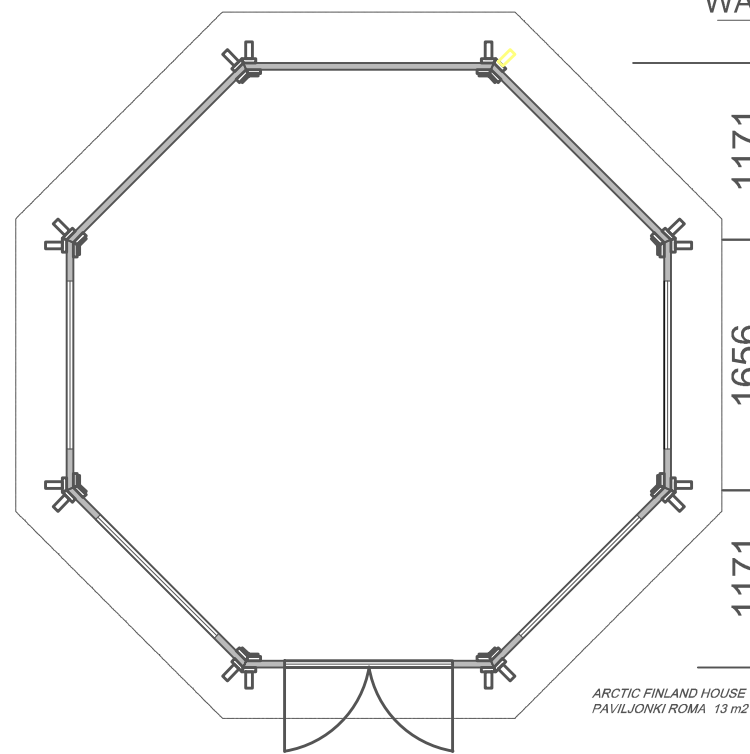


PAVILION ROMA 13 m²



4000



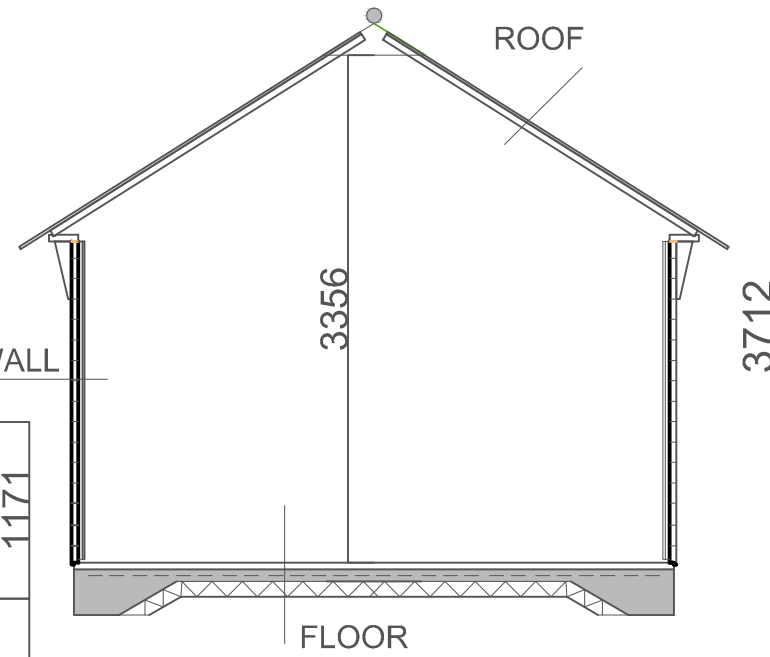
WALL

1171

1656

1171

ARCTIC FINLAND HOUSE
PAVILJONKI ROMA 13 m²



ROOF

3356

3712

FLOOR

ROOF

Roofing felt
Panel 18 x 145
Frame 45 x 45

WALL

Timber panel 45 x 145

FLOOR

Concrete slab 80 mm
Steel mesh embedded in concrete slab
(B500K 4-150)
Cellular plastic / styrofoam 100 mm
Compacted gravel 200 mm (0-16 mm)
Base frame 45 x 95 pressure impregnated
(Bitumen felt under base frame)

PAVILION ROMA 13 m ²	Drawings 1:50
ARCTIC FINLAND HOUSE Kaartotie 2, FIN-33950 Pirkkala P. 010 420 1230 arctic@arcticfinland.com	Christian Anttila (rkm)