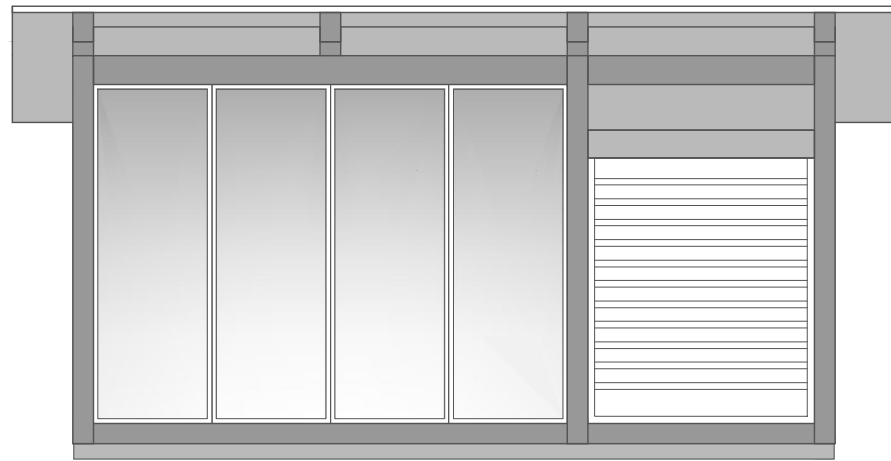
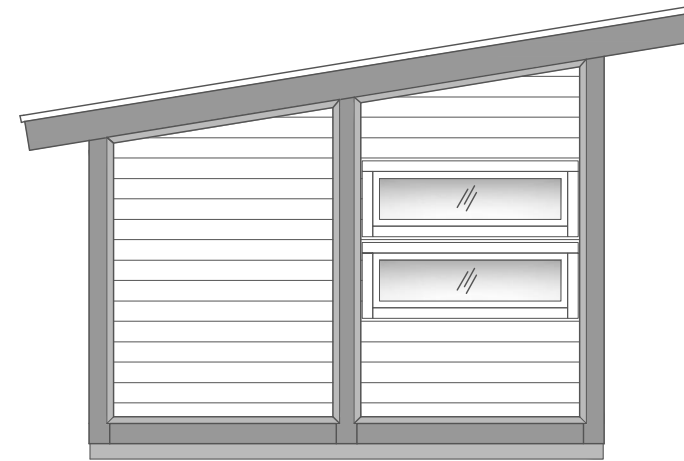


ARCTIC LINE SUMMER KITCHEN 17

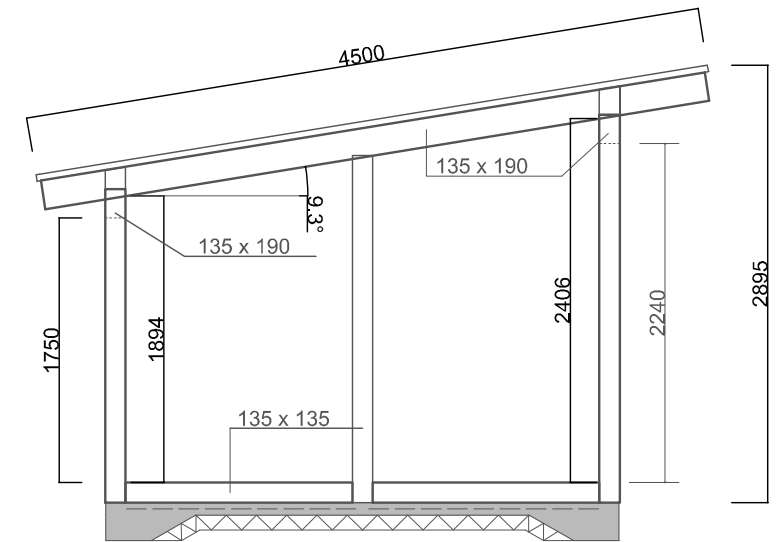


2895

ARCTIC FINLAND HOUSE  
ARCTIC LINE KESÄKEITTIÖ 17



ARCTIC FINLAND HOUSE  
ARCTIC LINE KESÄKEITTIÖ 17



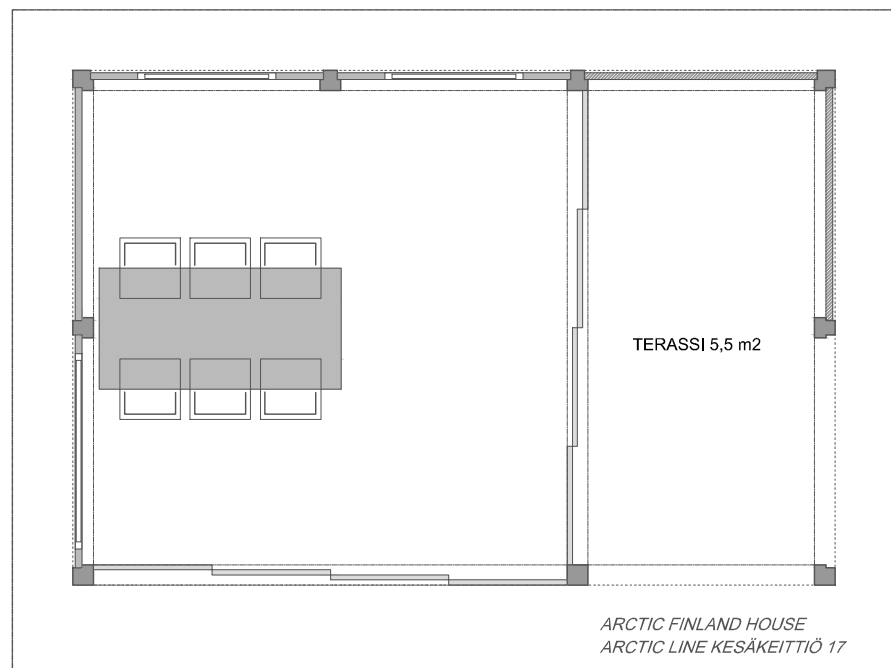
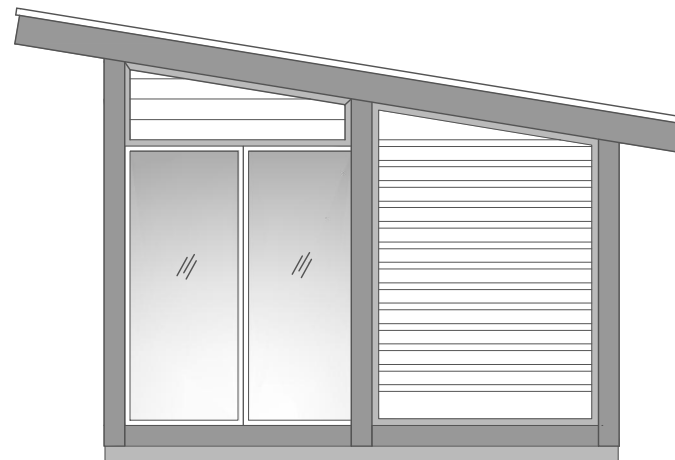
ARCTIC LINE SUMMER KITCHEN  
11,5 + 5,5 m<sup>2</sup>

Glued wooden frame  
135 x 135, 135 x 190

Wall element:  
pine panel 44 x 145  
Windows, sliding doors with lock

Roof :  
Material: pine panel 44 x 145  
Roofing felt

Floor:  
Floor frame  
Wood floor 28 mm



3405

ARCTIC FINLAND HOUSE  
ARCTIC LINE KESÄKEITTIÖ 17

5040

ARCTIC LINE SUMMER KITCHEN 17	DRAWINGS	1:50
11.5 m <sup>2</sup> + 5.5 m <sup>2</sup> / 36 m <sup>3</sup>		
ARCTIC FINLAND HOUSE KAARTOTIE 2 33950 PIRKKALA, FINLAND P. +358 10 420 1230	DESIGN: ARCTIC FINLAND HOUSE /MV 2012 / 10.4.2017	
	CHRISTIAN ANTTILA RKM	