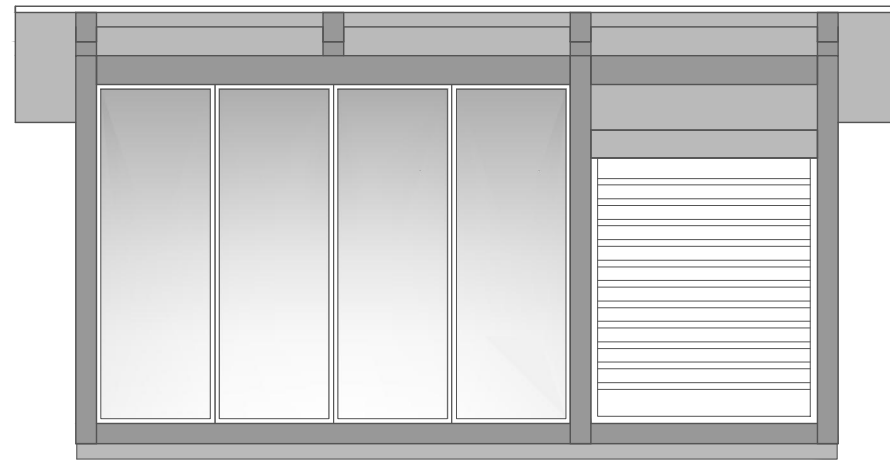
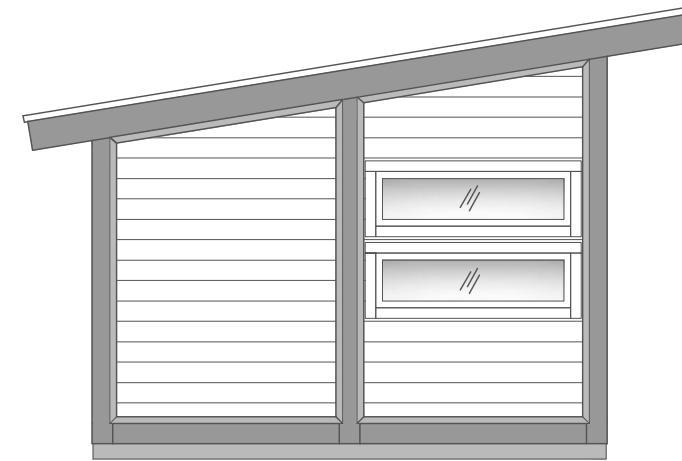


ARCTIC LINE SOMMARKÖK 17

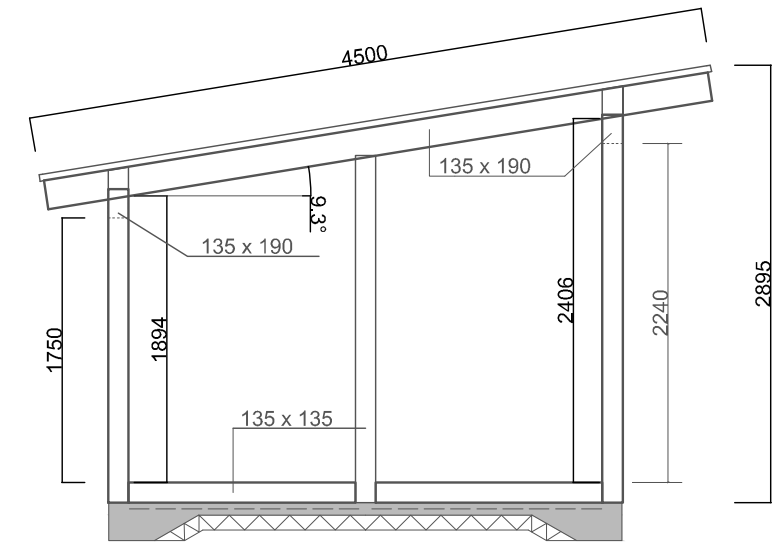


2895

ARCTIC FINLAND HOUSE
ARCTIC LINE KESÄKEITTIÖ 17



ARCTIC FINLAND HOUSE
ARCTIC LINE KESÄKEITTIÖ 17



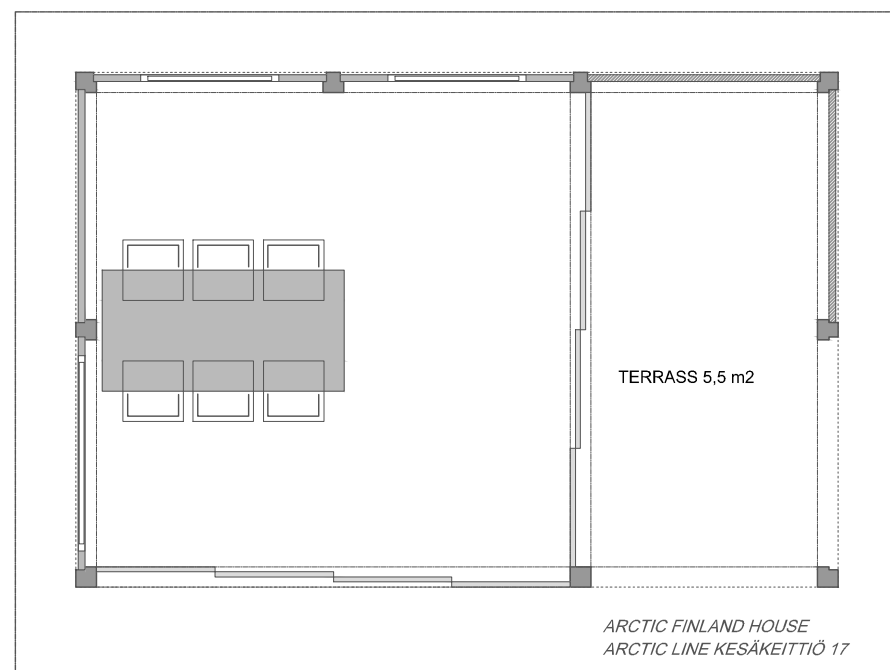
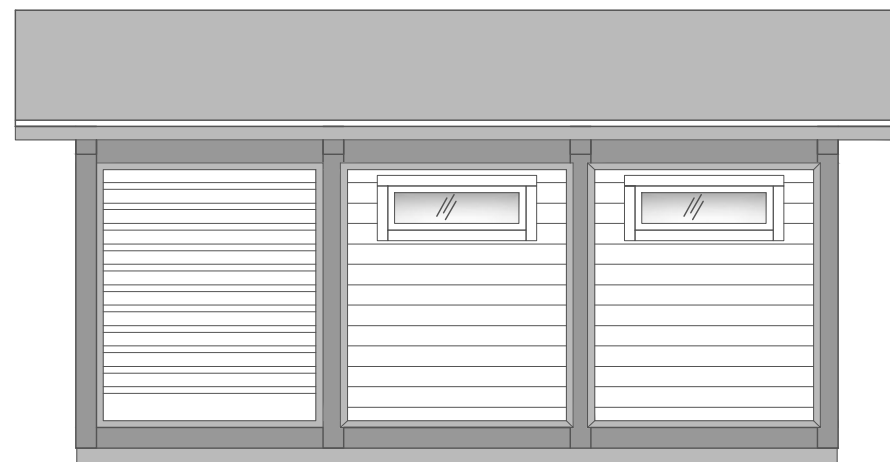
ARCTIC LINE SOMMARKÖK 17 m²

Limträ stomme
135 x 135, 135 x 190

Väggelement:
-furu paneel 44 x 145
-fönstrar
-gliddörrar

Tak :
-furu panel 44 x 145
-takshingel

Golv:
-terrass board
-golv stomme



ARCTIC FINLAND HOUSE
ARCTIC LINE KESÄKEITTIÖ 17

5040

3405

ARCTIC LINE SOMMARKÖK	RITNINGAR	1:50
11,5 + 5,5 m ² / 36 m ³		
ARCTIC FINLAND HOUSE KAARTOTIE 2 33950 PIRKKALA, FINLAND P. +358 10 420 1230	DESIGN: ARCTIC FINLAND HOUSE /MV 2012 / 10.4.2017	
	CHRISTIAN ANTTILA RKM	