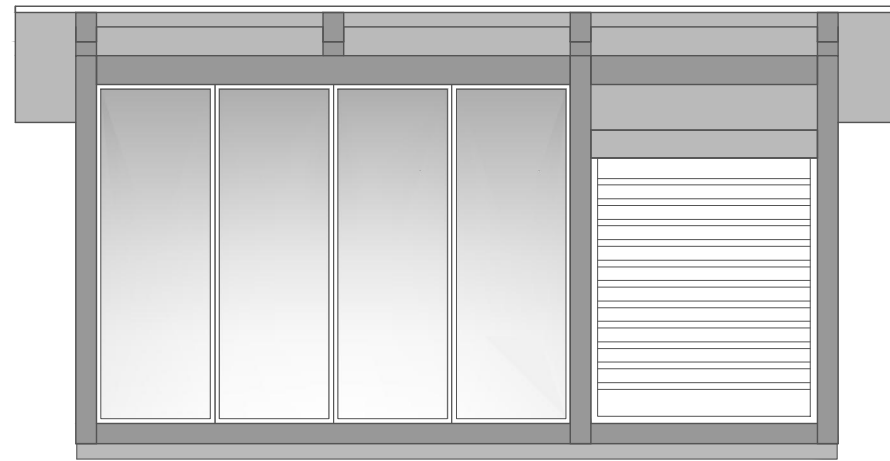
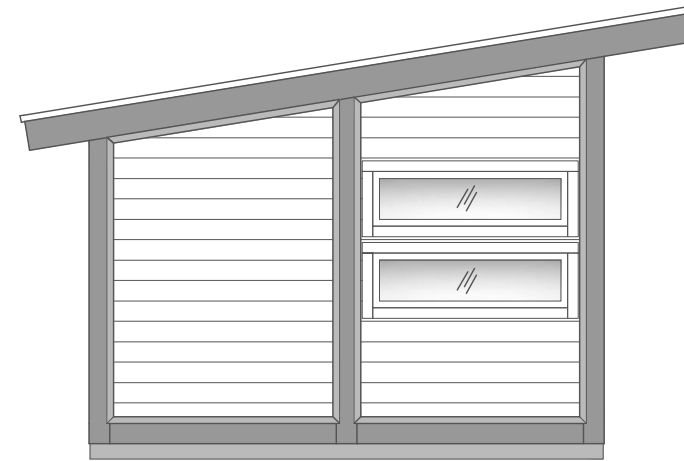


# ARCTIC LINE SOMMERKÜCH 17

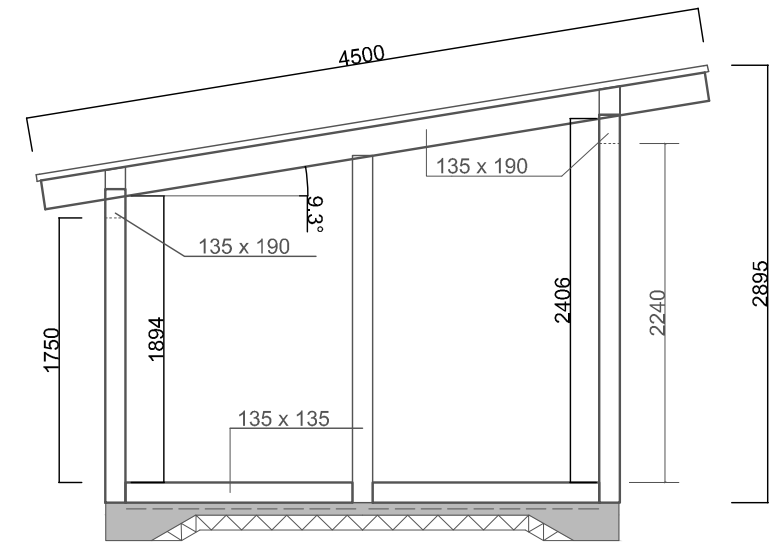


ARCTIC FINLAND HOUSE  
ARCTIC LINE KESÄKEITTIÖ 17

2895



ARCTIC FINLAND HOUSE  
ARCTIC LINE KESÄKEITTIÖ 17



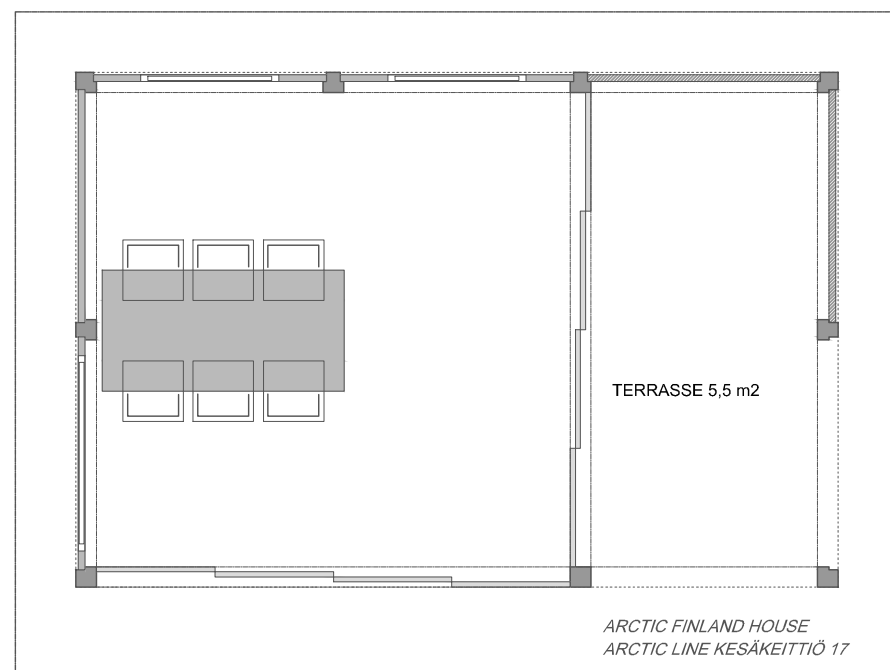
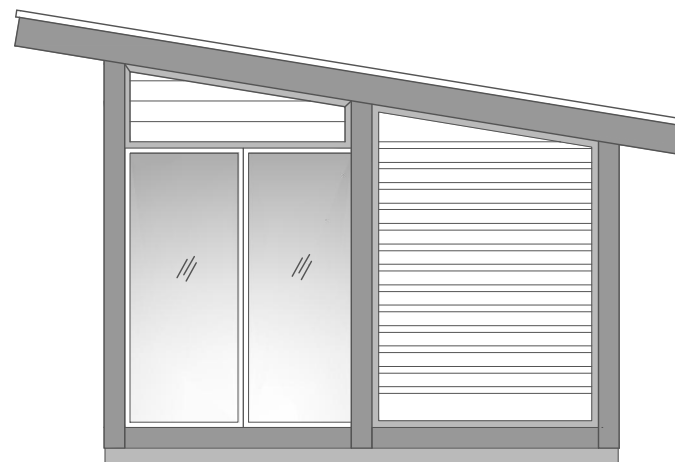
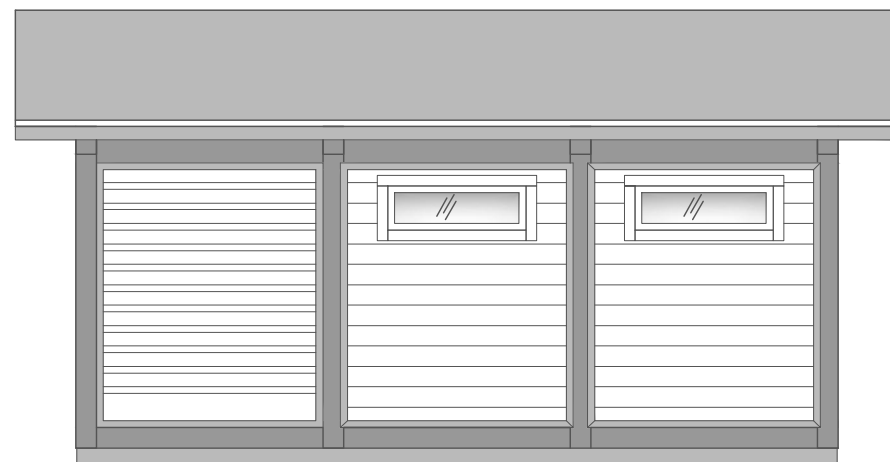
ARCTIC LINE SOMMERKÜCHE  
11,5 + 5,5 m<sup>2</sup>

Verleimter Holzrahmen  
135 x 135, 135 x 190

Wandelement:  
Material: Kiefernpaneele 44 x 145  
Fenster, Schiebetüren mit Schloss

Dach :  
Kiefernpaneele 44 x 145  
Bitumenschilden

Stock:  
Bodenrahmen  
Holzboden 28



ARCTIC FINLAND HOUSE  
ARCTIC LINE KESÄKEITTIÖ 17

5040

3405

ARCTIC LINE SOMMERKÜCHE 17 11.5 m <sup>2</sup> + 5.5 m <sup>2</sup> / 36 m <sup>3</sup>	ZEICHNUNGEN 1:50
ARCTIC FINLAND HOUSE KAARTOTIE 2 33950 PIRKKALA, FINLAND P. +358 10 420 1230	DESIGN: ARCTIC FINLAND HOUSE /MV 2012 / 10.4.2017 CHRISTIAN ANTTILA RKM